



THE NEXT PROGRESSION IN  
PROFICIENT PERFORMANCE.

**DENSPLY**  
TULSA DENTAL  
SPECIALTIES

# INNOVATION THAT NEVER RESTS.

*The patented, progressive taper design of the ProTaper Universal files not only improves flexibility and cutting efficiency; its shape is carried through the system with precision-matched components.*



## **ProTaper® Universal System Is Here.**

With its patented, progressive taper design and system-based efficiency, the ProTaper name is synonymous with exceptional performance. Now the innovation continues with the ProTaper Universal system, the next generation in the ProTaper legacy of proven endodontic solutions. Expanded and enhanced, the ProTaper Universal system delivers more of the efficiency, flexibility and precision you want for successful procedures.

## **Complete and Intuitive.**

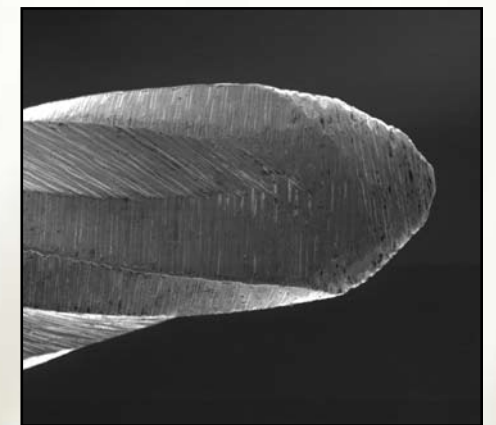
The ProTaper Universal system is a comprehensive solution built around the efficiency of ProTaper Universal nickel titanium files. Each element of the system works together to intuitively generate a seamless flow from instrumentation to obturation. From ProTaper Universal obturators and ProTaper Universal absorbent points to the addition of ProTaper Universal gutta-percha points, the system elements are precision matched to fit the shapes created by ProTaper Universal files. You get a progression of components that are made for each other – and made for your success.



*Flexible files in a flexible system. The ProTaper Universal Endo System's versatility allows you to address virtually all canal anatomy with the extended line.*

## **ProTaper Universal Rotary Files: Safer Tips That Stay True.**

In general, fewer ProTaper Universal files are needed to achieve a fully tapered canal exhibiting a uniform shape. And now, you can achieve these shapes with more precision and safety. The difference is a more rounded tip on all ProTaper Universal finishing files and improved flexibility on the larger finishing files that enable them to precisely follow the canal anatomy.



*A slight rounding of each ProTaper Universal finishing file's tip-transition angle helps the files stay true to the canal path and reduces transportation.*

# SMARTER THAN EVER.

## The Progressively Tapered Advantage Continues.

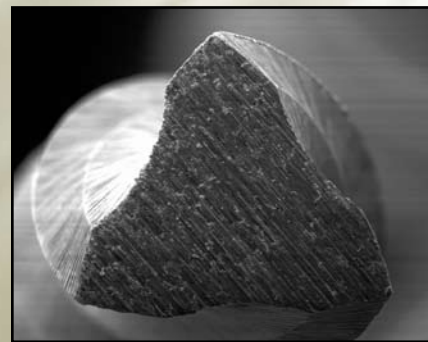
The strength of ProTaper Universal rotary files goes beyond their quality nickel titanium construction. These premium files feature a patented, progressive taper design that improves both flexibility and cutting efficiency, while reducing torsional loading and file fatigue. A progressively changing helical angle and pitch balance each instrument, effectively reducing threading and aiding in debris removal. In addition, their short handles improve access in hard-to-reach posterior teeth.

## Refined Design Features And Additional Finishing Files.

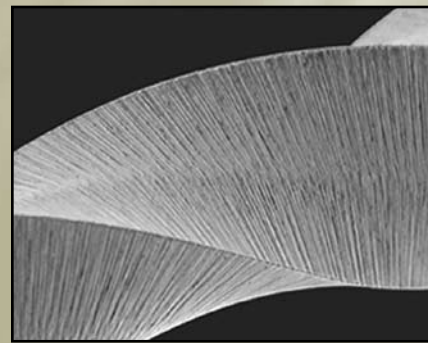
Enhanced features on ProTaper Universal rotary files make it the state-of-the-art in rotary file technology. Each innovative modification enables you to better instrument even challenging, calcified or highly curved canals. Additional F4 and F5 finishing files deliver more versatility and flexibility in the apical third.

## Rate of Taper

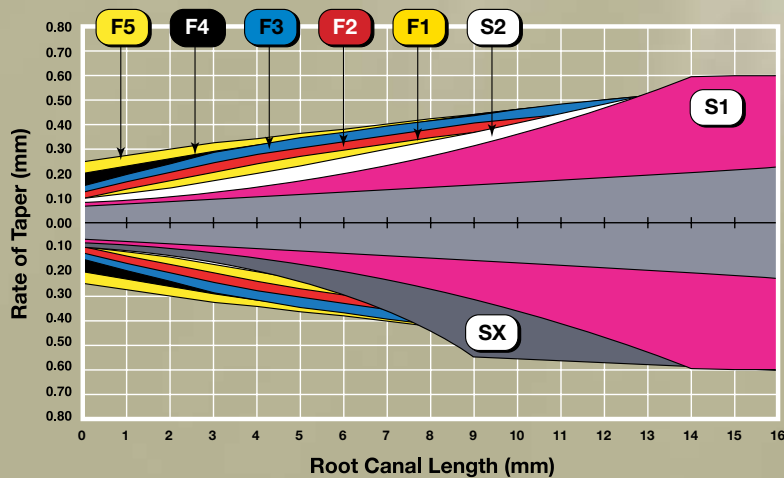
Because the rate of taper varies along the cutting flutes of each ProTaper Universal file, you get improved flexibility, cutting efficiency and safety.



The ProTaper Universal F3, F4 and F5 finishing files feature a reduced cross section that improves flexibility and helps the files closely follow the canal path.



A convex, triangular cross section reduces contact with the canal wall.



## Shaping Files

These instruments pre-enlarge and optimally shape the coronal 2/3 of the canal. The multiple tapers ensure flexibility and cut dentin in specific canal zones. A brushing action creates lateral space and allows the files' stronger and more efficient blades to passively move deeper into the canal.

### S1 Tip size 17



Used in a brushing manner, the S1 expands the glide path, and its Eiffel Tower shape primarily pre-enlarges the coronal portion of the canal.

### S2 Tip size 20



The S2 dominantly shapes the middle 1/3 and begins to expand the apical 1/3 in preparation for the first finishing file.

### SX Tip size 19



The SX file can be used for additional coronal shaping, if needed.

## Finishing Files

These instruments finish the apical 1/3. They produce the final deep shape in the canal and the correct apical fit for the matching ProTaper Universal obturators or master cones. Each finishing file features a decreasing rate of taper that enhances flexibility, reduces the possibility of over-preparing the coronal 2/3 of a canal and reduces the potential for taper lock.

### F1 Tip size 20



### F2 Tip size 25



### F3 Tip size 30



### F4 Tip size 40



### F5 Tip size 50



All ProTaper Universal rotary files are available in 21, 25 and 31 mm lengths.

## Customized Retreatment.

Complete and comprehensive, the ProTaper Universal system allows you to address virtually every clinical situation, including the possibility of retreatment. Its three, easily identified retreatment files are designed for the sequential removal of previously placed obturation materials from the coronal, middle and apical thirds of the canal. Each handle is no more than 11 mm long for better visibility.

## A Progressive Taper for Each Task.

ProTaper Universal retreatment files feature three different lengths, unique tapers and diameters to sequentially remove obturation materials. D1 has a working tip to facilitate initial penetration.

### D1 (30/.09)



For the removal of materials from the coronal 1/3.

### D2 (25/.08)



For the removal of materials from the middle 1/3.

### D3 (20/.07)



For the removal of materials from the apical 1/3.

# PRECISELY THE RIGHT TOOLS.

## ProTaper Universal Endo System Includes:

- Endo DTC Torque Control Motor
- Tulsa Dental Specialties 8:1 Mini-Head Contra Angle
- 6 packs of ProTaper® Universal Rotary Files
- 5 packs of ProTaper® Universal Obturators
- ProTaper® Universal Hand Files
- ProTaper® Universal Size Verifiers
- ProTaper® Universal Obturator Oven
- ProLube® Root Canal Conditioner
- ThermaSeal® Plus Sealer
- ProTaper® Universal Absorbent Points
- ProTaper® Universal Gutta-Percha Points
- ProRinse® Endo Irrigation Needles
- ProTaper® Universal File Stand
- Lexicon® K-Files
- Lexicon® FlexSSK® Files
- Lexicon® Barbed Broaches
- Lexicon® Amalgam Burs
- Lexicon® Diamond Access Burs
- Lexicon® Multi-Burs
- Lexicon® Pulp Shaper Burs
- PREPI® Burs
- Pro-Post® Drills
- Instructional DVD and Manual
- Technique Card

## This Is Where It All Fits Together.

With its complete bundle of premium components, the ProTaper Universal Endo System (Item #PTUENDOSYSDTC) does more than deliver the tools you need to achieve consistent outcomes. Every element is strategically designed to impact your efficiency and effectiveness. You'll see it in the Endo DTC torque control motor with its preprogrammed settings and agile Tulsa Dental Specialties hand piece for precision performance. You'll see it in the ProTaper Universal oven that provides sufficient heat in as little as 17 seconds. Most dramatically, you'll see it in the way ProTaper Universal obturators and master cones match the shapes created by ProTaper Universal files.



# PRECISELY THE RIGHT SHAPES.

## ProTaper Universal Obturators and Oven Keep Things Flowing.

ProTaper Universal obturators precisely match the shapes created by ProTaper Universal files. Their thermoplasticized gutta-percha flows from the orifice to the canal terminus to produce a three-dimensional fill into available lateral and accessory canals. They help you save time while creating a fill that reduces the chance of apical leakage. The ProTaper Universal oven provides sufficient heat in seconds and maintains the obturator at an ideal temperature.

## Efficiency That's Easy to Recognize.

In designing a well-planned system, we considered even the smallest details – right down to the addition of matching gutta-percha and absorbent points. Most importantly, sequencing and selection is streamlined through easy-to-recognize color coding that makes using the ProTaper Universal endo system as efficient as the ProTaper files themselves.

## The Final System Component: Expert Service and Support.

For more information or a clinical demonstration, we're always ready to help. Give us a call and find out more about what the ProTaper Universal system can do for your outcomes, your patients' comfort, and your practice.



ProTaper Universal hand files feature the same design advancements as their rotary counterparts. Color-coded silicone handles offer improved comfort and tactile sensation with less hand fatigue.

**DENTSPLY**  
TULSA DENTAL  
SPECIALTIES

Endodontics & Implants

*Our Quality. Your Success.  
Their Satisfaction.*

**DENTSPLY Tulsa Dental Specialties**

DENTSPLY International, Inc.  
5100 E. Skelly Drive, Suite 300  
Tulsa, OK 74135  
1-800-662-1202  
1-800-597-2779 (fax)  
[www.tulsadentalspecialties.com](http://www.tulsadentalspecialties.com)



**For Dental Use Only**

**Rx only**

**See Directions For Use**

© DENTSPLY International, Inc. Manufactured under U.S. patent nos: 5,658,145; 5,746,597; 4,758,156; 4,894,011; 5,059,183; 5,098,298; 5,118,297; 5,149,268; 5,833,457; 5,088,927; 5,624,976; 5,544,950; 5,762,541; 5,628,674; 5,527,205; 5,941,760; 5,464,362; 4,934,934; 6,106,296; 5,947,659

BPTES 2/08D